



Pan-Punch® 110 Category 5e System Kits

- Exceed ANSI/TIA-568-C.2 Category 5e standard
- Field terminable
- Ideal for use in cross-connects and consolidation point applications
- Provide pre-packaged components necessary for termination
- Include required quantity of bases and connecting blocks, label holders and labels
- Available in 100 or 300-pair bases with 3, 4, or 5-pair connecting blocks



100-Pair



300-Pair

Part Number	Part Description	Std. Pkg. Qty.	Std. Ctn. Qty.
-------------	------------------	----------------	----------------

100-Pair Termination Kits

P110KB1004Y	Field terminated. Includes a base, 4-pair connector kit with five 4-pair connectors and one 5-pair connector per row of 25 pairs, two label holders, and two white designation labels.	1	10
P110KB1005Y	Field terminated. Includes a base, 5-pair connector kit with five 5-pair connectors per row of 25 pairs, two label holders, and two white designation labels.	1	10

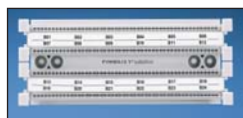
300-Pair Termination Kits

P110KB3004Y	Field terminated. Includes a base, 4-pair connector kit with five 4-pair connectors and one 5-pair connector per row of 25 pairs, six label holders, and six white designation labels.	1	10
P110KB3005Y	Field terminated. Includes a base, 5-pair connector kit with five 5-pair connectors per row of 25 pairs, six label holders, and six white designation labels.	1	10

It is common practice to completely fill each 25-pair wire strip with connecting blocks. Each kit contains the adequate number of connecting blocks to do so. Example: P110KB1004 includes five 4-pair and one 5-pair connecting block per 25-pair wiring strip for a total of twenty 4-pair and four 5-pair connecting blocks as well as two label holders and two white designation labels.

Termination tool available on page B.87 of SA-NCCB51.

Cable requirement: terminates most 22 – 26 AWL solid or stranded IWO wire with a 0.050" (1.27mm) max o.d., either PVC or plenum rated.



Component Quantity per Pan-Punch® 110 Category 5e Kits

Part Number	Bases		Connecting Blocks			Label Holders	Labels
	P110BW300	P110BW100	P110CB3	P110CB4	P110CB5	P110LH	DSL110
P110KB1004Y	—	1	—	20	4	2	2
P110KB1005Y	—	1	—	—	20	2	2
P110KB3004Y	1	—	—	60	12	6	6
P110KB3005Y	1	—	—	—	60	6	6